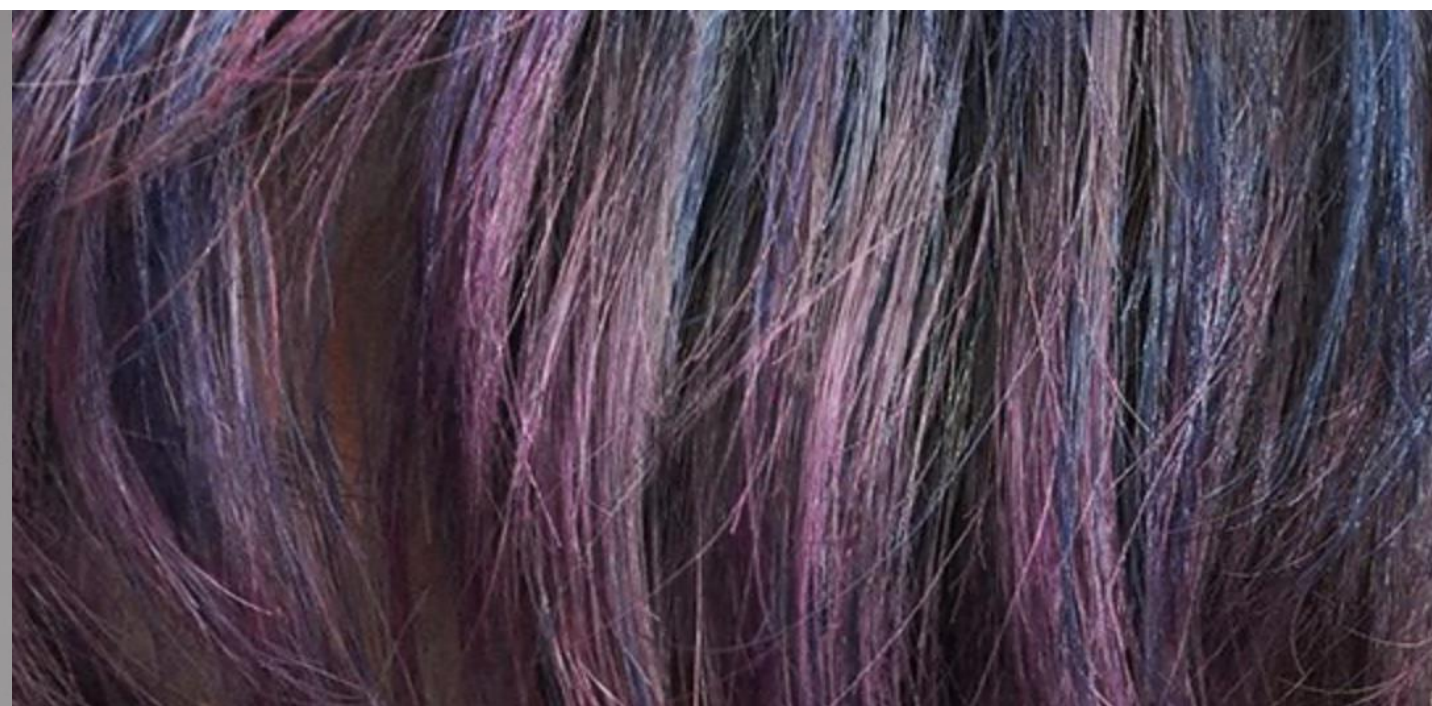


KAO SALON
VIRTUAL
EDUCATION.US
 GOLDWELL. KMS ORIBE

"To be the best, you have to learn from the best"



TOPCHIC & COLORANCE REVEALED			BLONDE AMBITION		
Wed 9/2 2PM	Thurs 9/10 8AM	Tues 9/22 10AM	Tues 9/1 12PM	Mon 9/14 1PM	Tues 9/22 8AM
Thurs 9/3 4PM	Tues 9/15 2PM	Wed 9/23 2PM	Thurs 9/3 6PM	Tues 9/15 4PM	Wed 9/23 10AM
Tues 9/8 9AM	Thurs 9/17 8PM	Thurs 9/24 11AM	Tues 9/8 11AM	Wed 9/16 12PM	Mon 9/28 2PM
Wed 9/9 11AM	Mon 9/21 3PM	Mon 9/28 10AM	Wed 9/9 2PM	Thurs 9/17 6PM	Tues 9/29 12PM



ELUMEN REVEALED - ELUMEN PAINTBOX		BLONDE AMBITION NEXT LEVEL - CREATIVE BLONDE TONING		TOPCHIC & COLORANCE REVEALED - COLOR CORRECTION	
Tues 9/1 10AM	Mon 9/21 12PM	Wed 9/2 5PM	Wed 9/23 12PM	Tues 9/1 8AM	Wed 9/30 2PM
Wed 9/2 12PM	Thurs 9/24 1PM	Tues 9/8 1PM	Tues 9/29 8AM	Mon 9/14 3PM	
Thurs 9/10 10AM	Tues 9/29 10AM	Wed 9/9 4PM	Wed 9/30 5PM	Wed 9/16 10AM	
Mon 9/14 11AM	Wed 9/30 12PM	Tues 9/15 6PM		Tues 9/22 4PM	
Wed 9/16 2PM		Mon 9/21 9AM		Mon 9/28 12PM	

All class times are listed in Eastern Standard Time. Use this [link](#) to convert the time to your city.



2020 Class Descriptions

Topchic & Colorance Revealed: Experience the world of Topchic & Colorance. Gain confidence to use demi & permanent hair color effectively within the Goldwell Service Cycle. Learn the tips and tricks that make Goldwell the perfect partner to all your hair color needs.

Blonde Ambition: Highlighting, decolorizing and toning services: we have it covered. Learn about the endless ways to create the perfect blonde using Goldwell's blonding portfolio.

NEW Topchic & Colorance Revealed – Color Correction: Professional salon solutions for turning color challenges into thrilling results. From removing color, coloring darker, filling, tinting back, to overcoming color fading.

NEW Blonde Ambition Next Level – Creative Blonde Toning: An experience designed specifically for salon professionals who want to learn how to grow their blonding business through creative formulation and techniques.

NEW Elumen Revealed - Elumen Paintbox: Expand your pursuit to learn how to achieve brilliant color results with exceptional shine and durability with Elumen. This technology allows you to enhance your creativity and offer new, brilliant, long-lasting color results for your clients.

"To be the best, you have to learn from the best"

